

HOTEL ST. AUGUSTINE

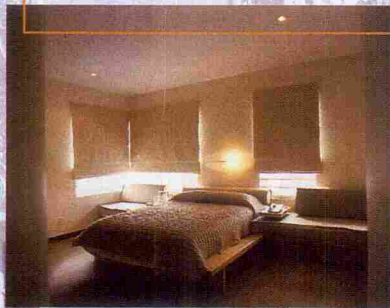
Where form meets function.

347 WASHINGTON AVENUE, MIAMI BEACH

☎ 305.532.0570 ☎ 800.310.7717 ☒ 305.532.8493

www.hotelstaugustine.com

"...chic hideaway in the south of fifth district."—*Ocean Drive*, May 2000



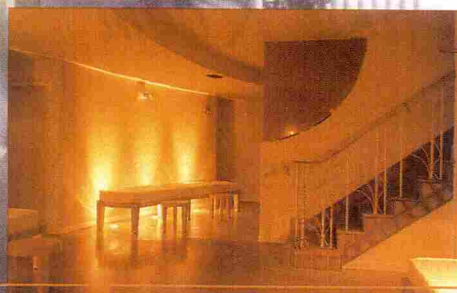
"...stylish elite, gravitate toward Hotel St. Augustine."—*Paper*, May 2000



"...A new entry in South Beach's blossoming 'SoFi' district (south of fifth)."—*Travel & Leisure*, February 2000



"Totally new concept...distinguished...intimate ambiance...personal spa."—*Selecta*, March 2000



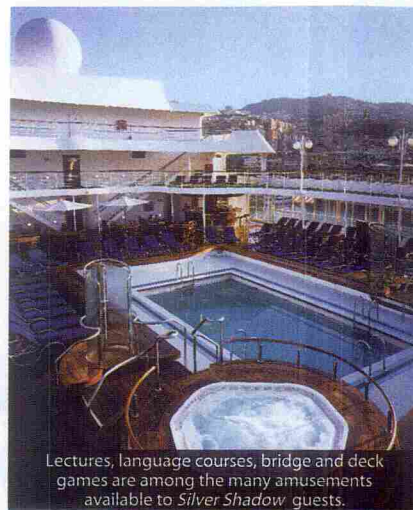
"...Peter Page preserved the St. Augustine Art Deco heritage...making it one of South Beach's most unique hotels."—*The Boardroom*, April/May 2000

TRAVEL

By Suzy Buckley

Silver Jubilee

Gigantic grandeur meets petite sophistication in SilverSea Cruises three-ship fleet. The 28,258-ton, 382-passenger *Silver Shadow* took its inaugural voyage this September, traveling from Rome to Lisbon in unparalleled style. Less is more when it comes to exploring exotic destinations: SilverSea builds its vessels so they can easily navigate the most exclusive waterways on earth. With itineraries throughout the Mediterranean, Northern Europe, Africa and India, the Far East, Australia and New Zealand, South America, Canada and New England, and the U.S. colonial coast, the world's smallest luxury ships provide some of the most inventive and diverse seven-to-18 day vacation experiences around.



Lectures, language courses, bridge and deck games are among the many amusements available to *Silver Shadow* guests.



The SilverSea Cruises' passenger-to-space ratio of 74 feet is unmatched by any other line.

ESCAPE BELOW THE EQUATOR

From air to sea, fares are all-inclusive, and cater to discriminating guests with well-seasoned tastes. In addition to the round-trip airfare and deluxe pre-cruise hotel accommodations, all beverages, gratuities, port charges and transfer fees are included. Upcoming worldwide itineraries for the *Silver Shadow's* first season include this month's 18-day voyage from Buenos Aires to Valparaiso via Uruguay, Argentina, Chile and the Chilean fjords. Following this trip, the *Silver Shadow* takes a holiday cruise from December 19th through January 6th, bringing guests off the beaten path to Port Stanley, Falkland Islands.

PLATINUM TOUCHES

SilverSea's intimate luxury ships ensure continuity of the fleet's renowned level of on-board service and amenities. Aboard the *Silver Shadow*, a private teak balcony is a staple in nearly every cabin, and guests can choose to stay in one of the ship's 134 large Veranda Suites, which feature 349 square feet of luxurious space. Its passenger-to-space ratio is 74 feet, and yet to be matched by any other cruise line. *Silver Shadow* suites feature beds topped with Italian Frette linens and soft down pillows, while bathrooms are adorned with Italian marble, Bulgari bath amenities, Christofle silver, plush robes, slippers and fresh flowers.

OFFSHORE INDULGENCES

The opulence extends beyond the cabins onboard the *Silver Shadow* with Le Champagne, the ship's signature wine and champagne bar by Mötet & Chandon, and The Humidor cigar club by Davidoff. Guests can also take advantage of international well-being experts, naturally blended treatments and Balinese techniques at the *Silver Shadow's* Mandara Spa. Available services include the hot-lava rock massage, milk and honey hydrotherapy bath, and a Javanese honey steam wrap, which incorporates unexpected ingredients such as cinnamon, ginger, coffee and sea salt. The *Silver Shadow* offers onboard activities to amuse any guest—lectures, language courses, wine tastings, deck games and bridge by day, and dancing, music, shows, cabaret acts, casino gaming and cinema by night. 📺

Shot on Site

Miami



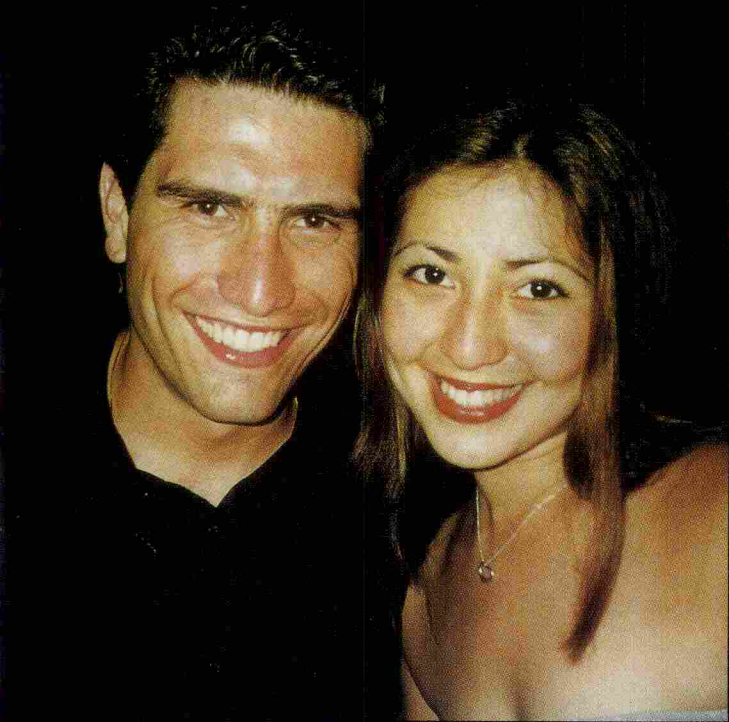
Anita Thomas, Myles Chefetz and Sandra Carlin at Nemo.



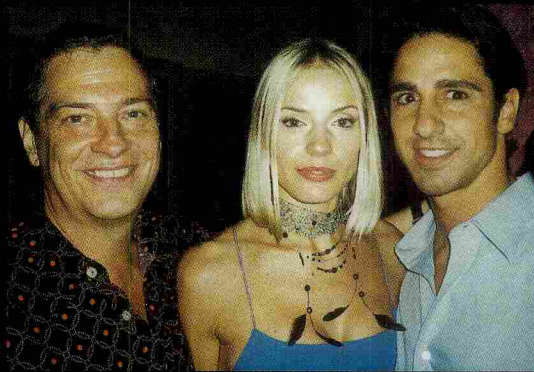
Jill Dorfman and Gerard Butler at Touch.



Eugenia Alfaro and Sa...



Roberto Olivi and Candise Shanbron at The Living Room.



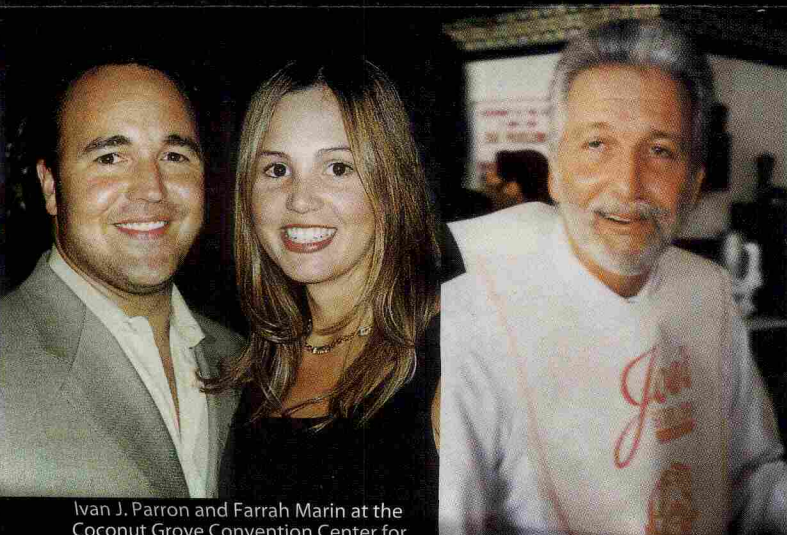
Tim Hogle, Irina and Frank Recupero at Tantra.



Cathy Gordon and Nanc...

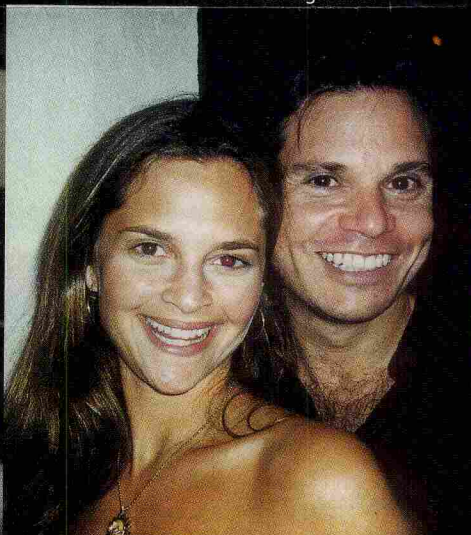


Fernando Canala, Lisa Rendi and Andrew Devlin at Hotel St. Augustine.



Ivan J. Parron and Farrah Marin at the Coconut Grove Convention Center for Discovery Latin America's Up Front party.

Neal Litman at Joe's Stone Crab.



Daniela Swaebe and Ian Kukoff at Touch.



Alcira Gil and Paul Joyce...